

STIFTUNG
MOZARTEUM
SALZBURG

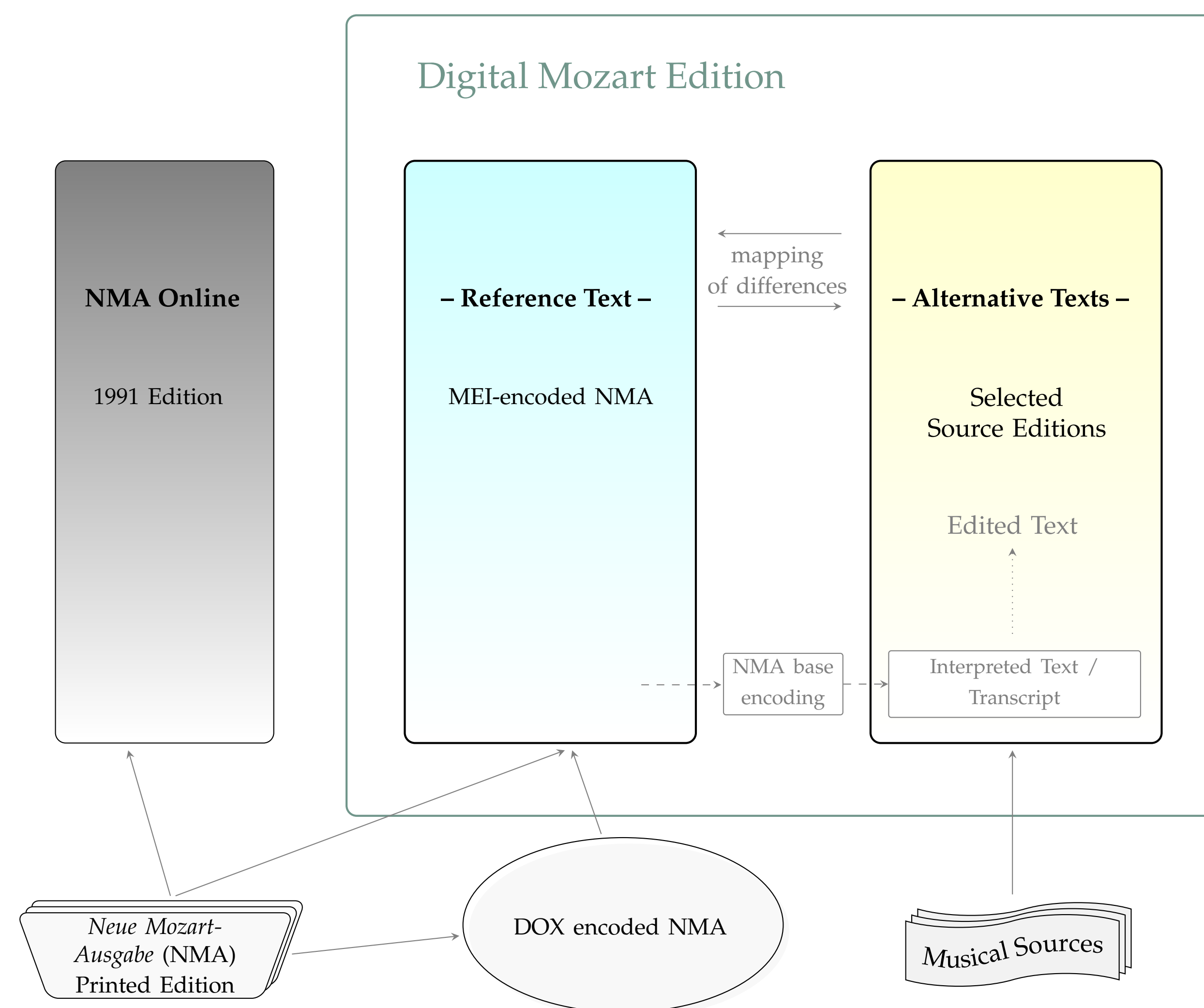
The Digital Mozart Edition as a Digital Music Edition

Norbert Dubowy, Felix Gründer, Franz Kelnreiter, and Till Reininghaus

Stiftung Mozarteum Salzburg in Cooperation with The Packard Humanities Institute, Los Altos, CA.

Abstract

The *Digital Mozart Edition* (DME) is the continuation and expansion of the *Neue Mozart-Ausgabe* (NMA) in the modern digital age. The DME aims to make Wolfgang Amadé Mozart's (1756–1791) entire musical oeuvre available to everyone in digital scholarly editions coded according to the standards of the Music Encoding Initiative (MEI).



Basic Structure

The DME Music Edition (DME::Music, <http://dme.mozarteum.at/music/>) relies on two strands of editions:

- a fully digital representation of the musical text of the NMA, updated and enriched for online display
- new editions of selected works chosen according to specific criteria

With this project, the ISM is launching a new approach in the field of complete work editions.

‘Reference Text’: The NMA digitally re-mastered

The retrodigital edition of the composer's complete works:

- same content as in the NMA (and its offshoot the NMA Online, <http://dme.mozarteum.at/nma/>), some 22,000 pages of music published in 127 volumes
- based on the complete encoding of the NMA (DOX format) provided by the Packard Humanities Institute (PHI)
- editorial markup of the printed edition (normalizations, additions) preserved in the encoding
- updated with addenda and corrigenda during post-processing
- available online with a range of advanced functionalities
- synchronized with NMA Online for reference

The DME Web Interface

The DME GUI is built around the Verovio music engraving library and offers the following features:

Interactive search and navigation options:

- Extended possibilities of navigation, from simple scrolling to the targeted search for individual bars or musical objects
- The interactive display of editorial additions and interventions

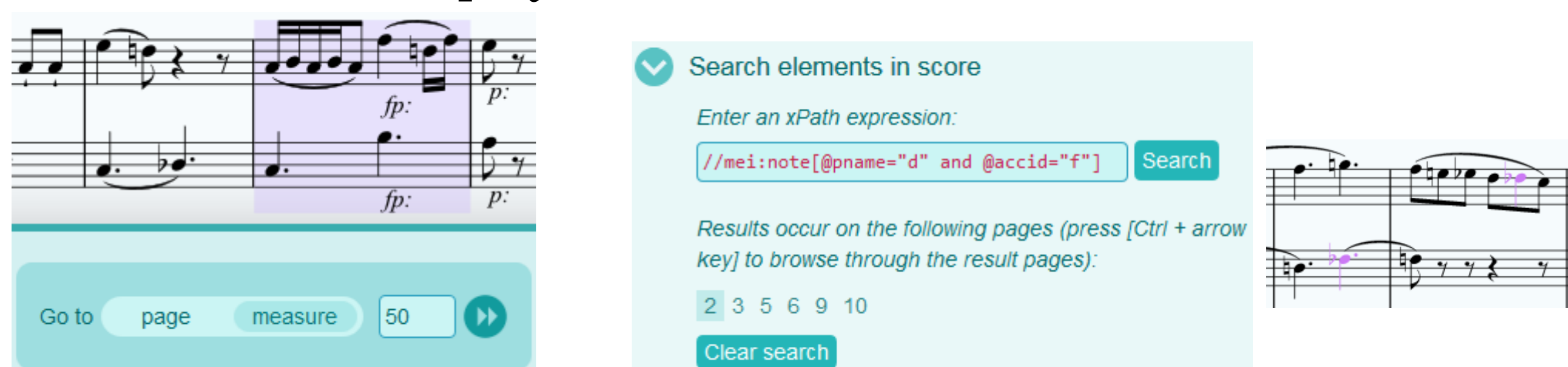


Figure 1: search and navigation interface

Variable display options:

- full score or selected staff and staff combinations display
- custom renditions of the musical score, such as:
 - the notation of transposing instruments at sounding pitch
 - the original score order
 - the preservation of original system and page breaks
 - code inspection tool for individual objects and synoptic display of MEI code and rendering panes

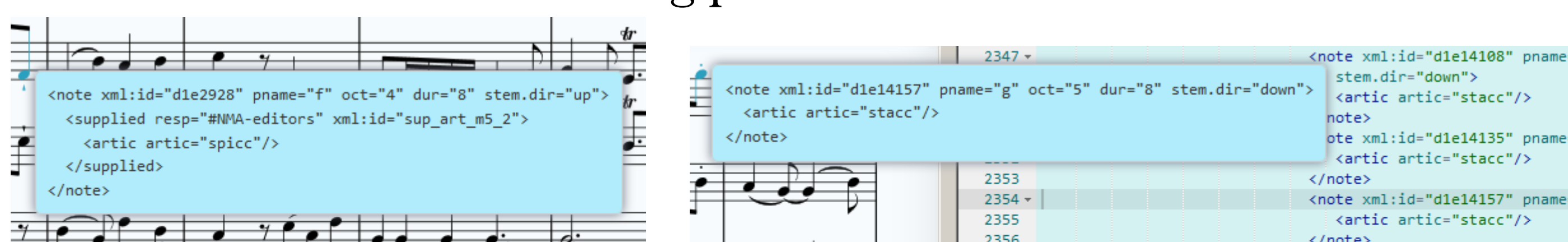


Figure 2: code inspection tools

Output formats and exchange interfaces:

- XML download
- printing (PDF)
- RESTful services (API)
- addressability (OMAS)
- MIDI playback and synchronous linkage to audio or video files
- Re-use by third party based on CC BY SA NC 4.0 license

‘Alternative Texts’: New editions within the DME

In addition to the NMA reference texts, the DME strives to offer a series of new editions of selected works. Guiding aspects for the selection are:

- the state of the sources and their preservation
- the need for an up-to-date re-edition
- new insights and evidence into the work, its transmission and reception
- suitability in terms of representation as a digital edition

The new editions are exclusively source editions that are based on a single source.

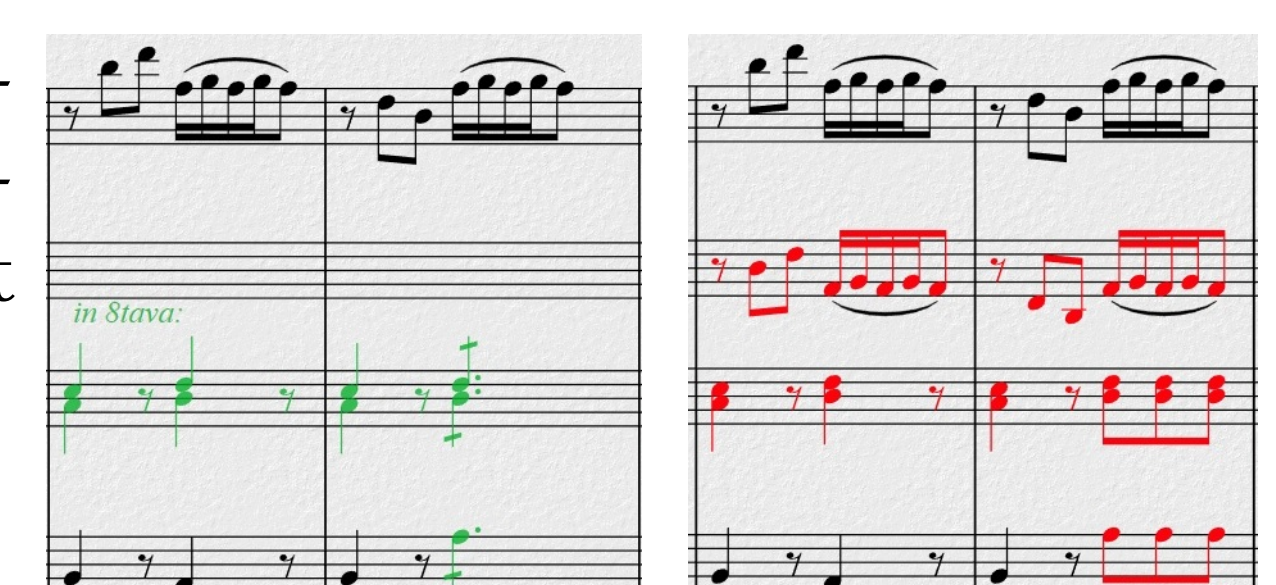
The workflow from source to edition proceeds in several stages of textual representations which are visualized in the DME UI:

- a *transcript* or *source protocol* documenting a range of genetic information (hands and hand shifts, earlier readings) and any shorthand notations and copy marks



Figure 3: handwriting processes

- an *interpreted text*, a normalized version of the source text with any shorthand notation resolved and without editorial interventions



- newly *edited text* featuring editorial interventions and decisions and optionally comparable with corresponding NMA reference text



Credits & Contact Information

DME::Music is currently cooperating with the following institutions:



<https://dme.mozarteum.at/music/>
dme@mozarteum.at